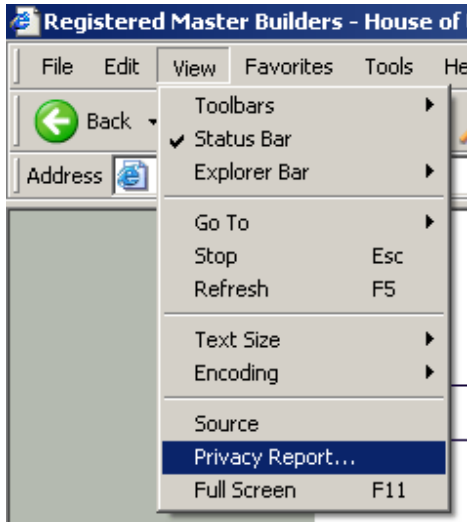


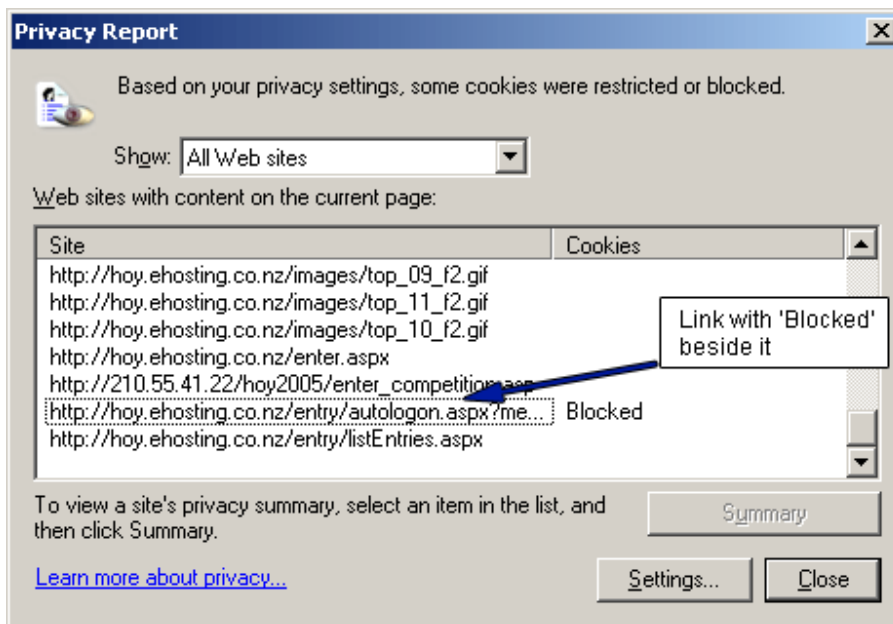
If you are experiencing trouble logging in and using Internet Explorer 6 and the following is happening:

You click 'login' and the details you have entered disappear and you remain on the same page.

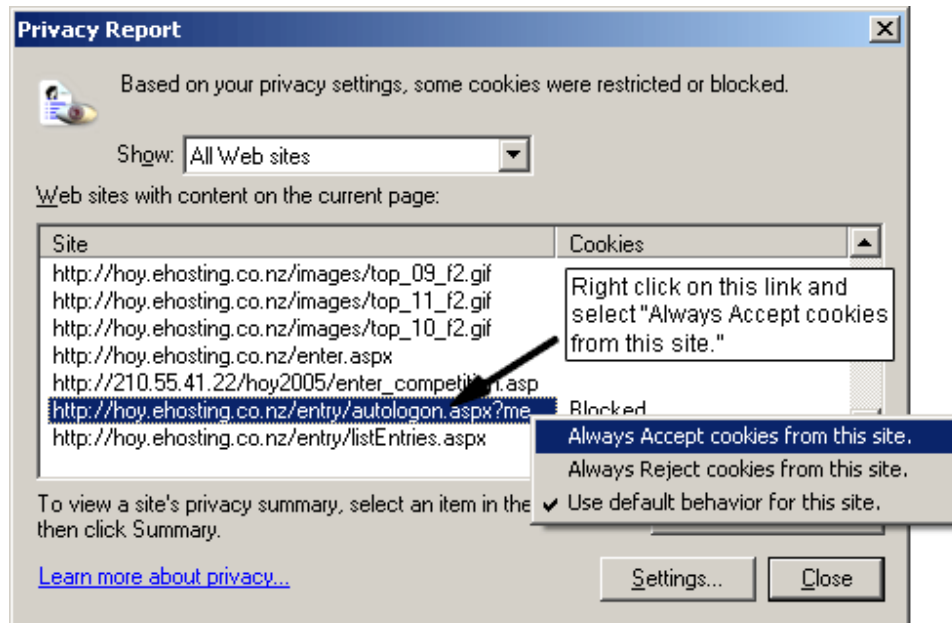
Select "Privacy Report ..." from the view menu.



Scroll down until you find the link below with "Blocked" in the Cookies field



Right click on this link and select "Always Accept cookies from this site."  
Then click Close



Try logging in again.